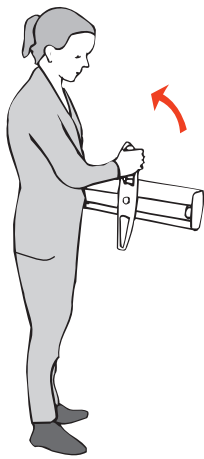
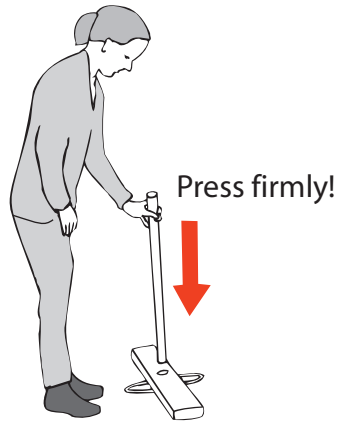


Set-up Expand LinkWall



1



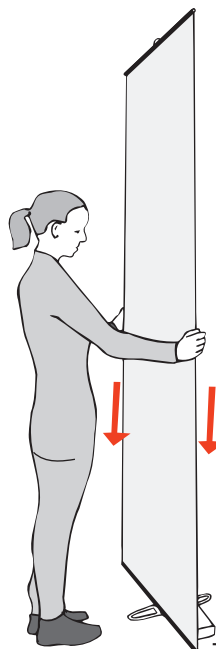
2



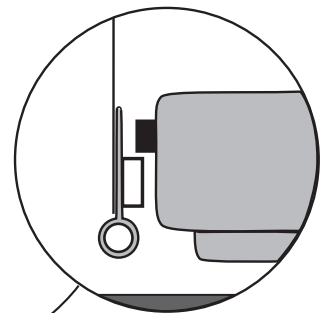
3



4



5

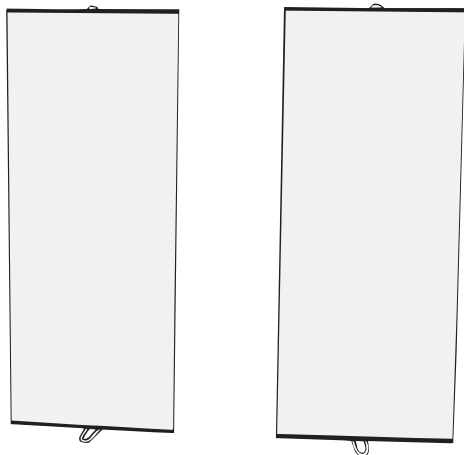


Magnetic lock

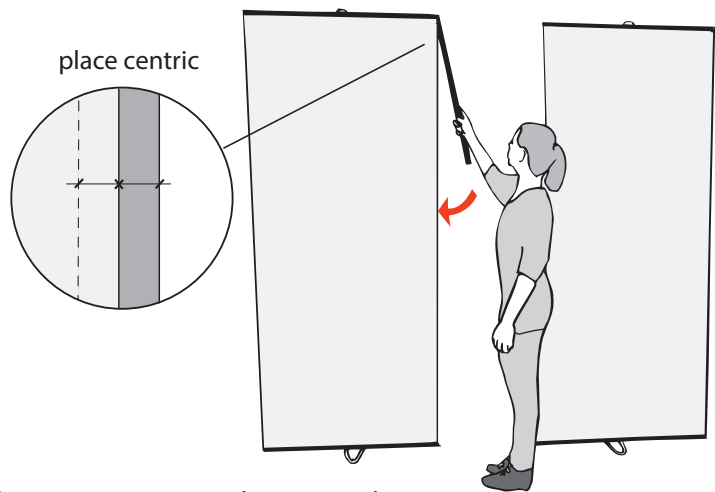
Set-up with flex link panel

(for taller versions a ladder is recommended)

220 cm height

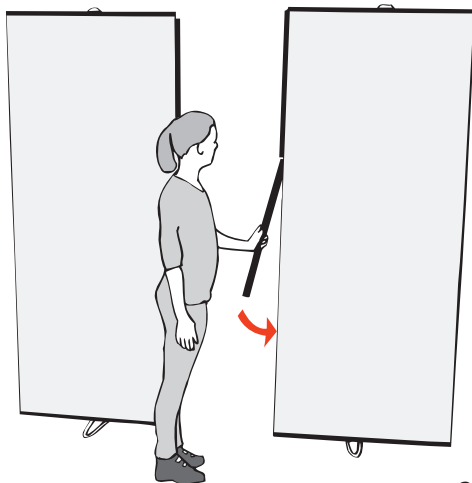


1



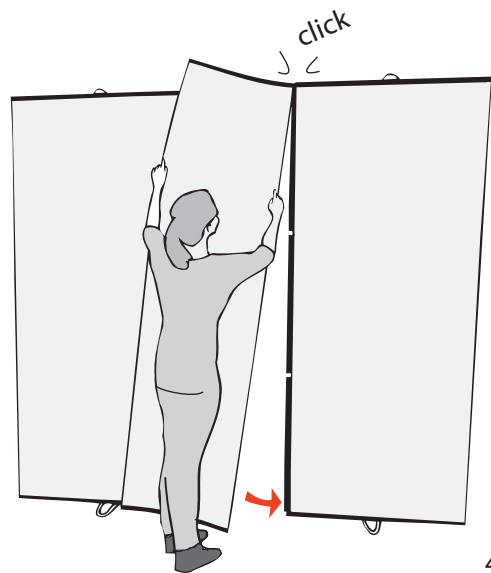
attach magnetic bars

2

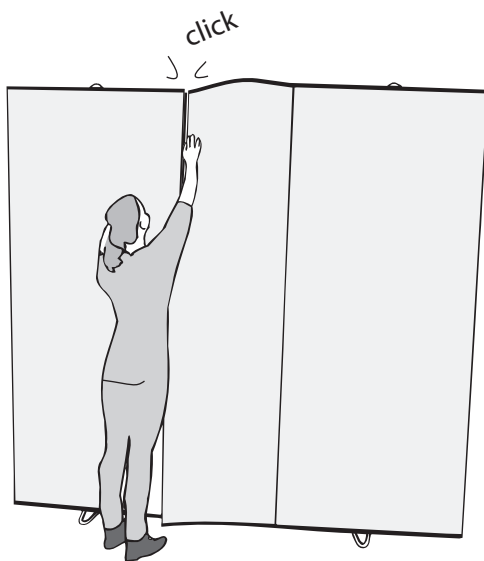


...along both panel sides

3



4



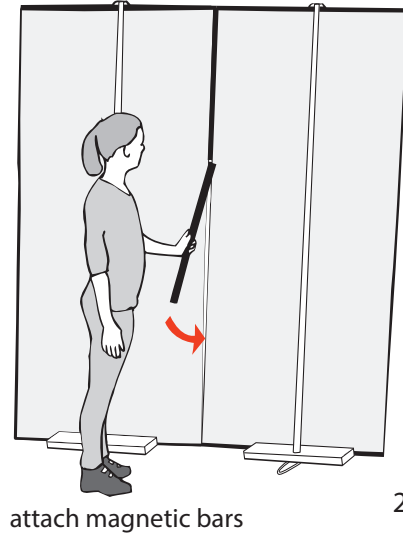
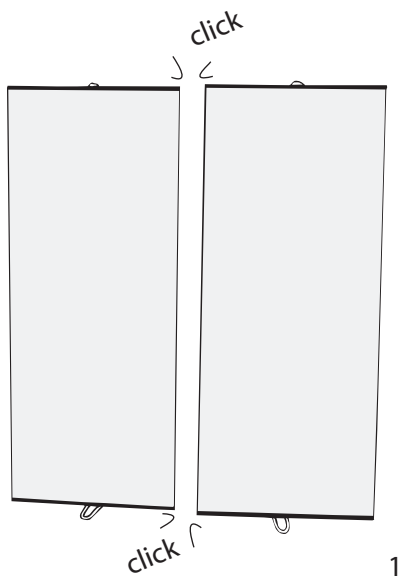
5



6

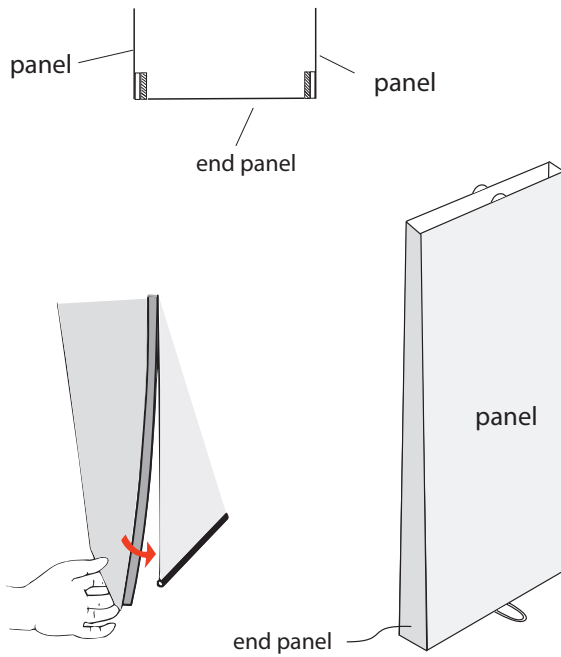
Set-up without flex link panel (for taller versions a ladder is recommended)

220 cm height

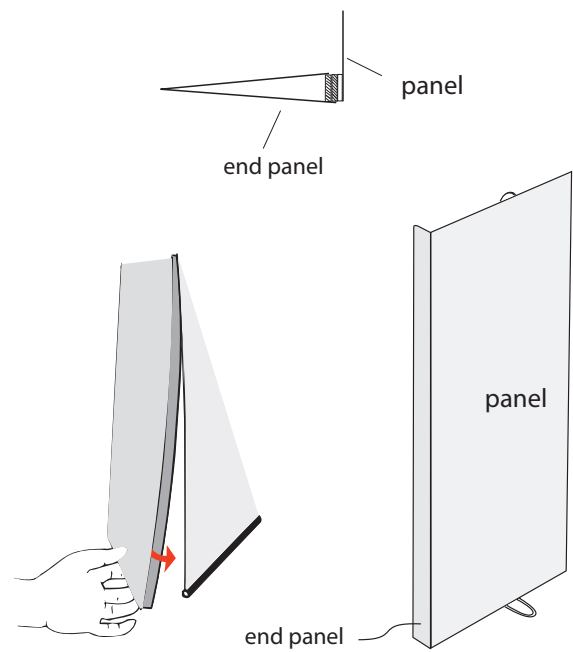


How to attach end panel

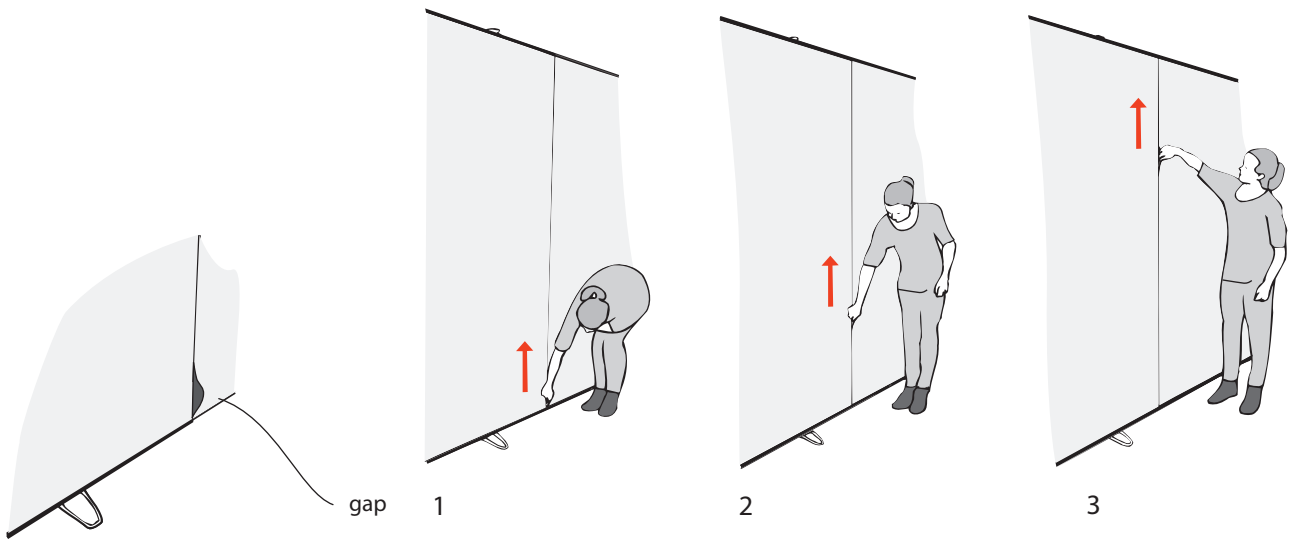
for double sided unit



for single sided unit

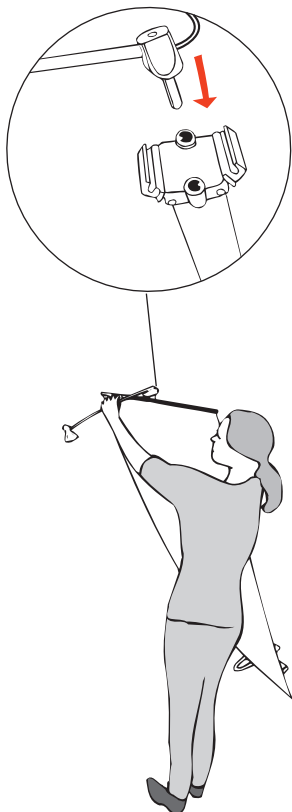


How to align graphics



Attaching spotlights

Expand Spotlight 50W



Expand Spotlight 150W/LED

